

Curriculum Guide

Key Stage 1
(Year 1 and Year 2)



Guiding Statements

OUR MAXIM

Challenging Minds, Embracing Diversity, Building Character

OUR MISSION

We empower students to be global citizens with the 21st century skills they need for lifelong achievement and success. We cultivate their capacity for excellence, leadership, empathy and impact while embracing diversity in a safe and caring environment.



Table of Contents

TSI Mission and Core Values	02
------------------------------------	-----------

Introduction to Learning	04
---------------------------------	-----------

The Curriculum
Learner Attributes
Program of Inquiry

Primary School Overview	09
--------------------------------	-----------

Key Stage 1	10
--------------------	-----------

Curriculum
Assessment

Core Subjects	12
----------------------	-----------

Mathematics
English
Units of Inquiry
Thai Language and Culture
Foreign Language
Integrated Art
Music
Physical Education



Introduction to Learning

The Curriculum

At TSI, we believe that all learning opportunities form an essential part of the curriculum. Our approach is designed to provide students with a rich, balanced, and purposeful education that nurtures both academic achievement and personal growth.

The UK National Curriculum forms the foundation for teaching and learning in Key Stage 1 (Years 1–3) and Key Stage 2 (Years 4–6). Building on this, TSI staff have developed a bespoke Programme of Inquiry tailored to our school community. Each class explores 4–6 integrated Units of Inquiry per year, focusing on both academic knowledge and character development.

Our curriculum is rich in content and places strong emphasis on developing conceptual understanding through central ideas, key concepts, and lines of inquiry. All units are closely aligned with the UK National Curriculum and are carefully differentiated to meet the needs of all learners through our comfort, stretch, and challenge model. This approach allows students to make deep, meaningful connections, consolidate their skills, and apply their learning across disciplines.

Importantly, our curriculum also fosters Global Citizenship and the development of 21st-century skills, and is guided by our mission:

We empower students to be global citizens with the 21st-century skills they need for lifelong achievement and success. We cultivate their capacity for excellence, leadership, empathy, and impact while embracing diversity in a safe and caring environment.

Core subjects, Mathematics, English, and Inquiry, are taught by homeroom teachers, while a wide range of specialist subjects are delivered by expert curriculum and language specialists.

We value strong partnerships with families. At the beginning of each academic year, parents are invited to curriculum information sessions specific to each year level. Curriculum overviews and suggested opportunities for home learning are shared with families each half term, while Parent–Teacher Conferences (3-Way Conferences) provide regular updates on each child's progress.

The Wider Curriculum

Service Learning

Service learning is at the heart of TSI's Mission and Values. Students are encouraged to participate in community service throughout their time at school, developing an understanding that service is fundamental to humanity and can positively impact the lives of others.

Students engage in service through the curriculum as well as through school-wide events, such as Langar (Community Kitchen) and Chabeel Day, which provide hands-on opportunities to practice compassion, teamwork, and empathy. The school also uses important cultural events, including Loy Krathong, Songkran, Vaisakhi, and other celebrations on the Sikh calendar, to further promote service learning and reinforce TSI's mission and values.

Through these experiences, students learn the importance of contributing to their community, respecting diversity, and taking meaningful action that reflects the core principles of TSI's educational philosophy.



Student Leadership and Student Council

At TSI, we believe in nurturing students to become proactive leaders who inspire and support their peers. From the earliest stages of their education, students are encouraged to take on leadership roles, fostering a sense of responsibility and community.

In the Primary School, students actively participate in the Student Council, serving as representatives for their classmates. These young leaders are involved in decision-making processes that impact the school community, plan and organise events, and spearhead fundraising initiatives. Their efforts also extend to supporting local charities, such as the Bangkok Local Orphanage, demonstrating a commitment to social responsibility.

This emphasis on student leadership continues throughout a TSI student's journey, evolving and expanding as they progress into Senior School. By the time they graduate, students have developed a strong foundation in leadership, equipped with the skills and experiences to make meaningful contributions to society.





Field Trips

Learning beyond the classroom is an integral part of the TSI curriculum, and all students have the opportunity to participate in field trips. Throughout the school year, these trips are carefully planned to complement the Programme of Inquiry, allowing students to explore real-world connections and deepen their understanding of the topics they study in class.

Students from Nursery to Year 5 participate in two field trips per year, while Year 6 students take part in one Residential Camp per year, providing immersive experiences that support both learning and personal development. For our Pre-Nursery students, we arrange visits from community helpers such as ambulance staff, dentists, and veterinarians, bringing learning about the wider world directly into the classroom.

These experiences help students build practical knowledge, develop social skills, and make meaningful connections between their learning and the world around them.

Extracurricular Activities

Extra-curricular activities are widely offered at TSI, providing students with opportunities to learn and grow in a variety of contexts. Students in Years 1 to 6 are offered a combination of internal and external clubs, including Taekwondo, Football, Cooking, Chess, and many more, allowing them to explore new interests, develop skills, and build confidence beyond the classroom.

These activities also support the development of 21st-century skills, including teamwork, leadership, creativity, and problem-solving, helping students apply their learning in meaningful and practical ways.



STAR Learner Attributes



STAR LEARNERS

Successful
upportive

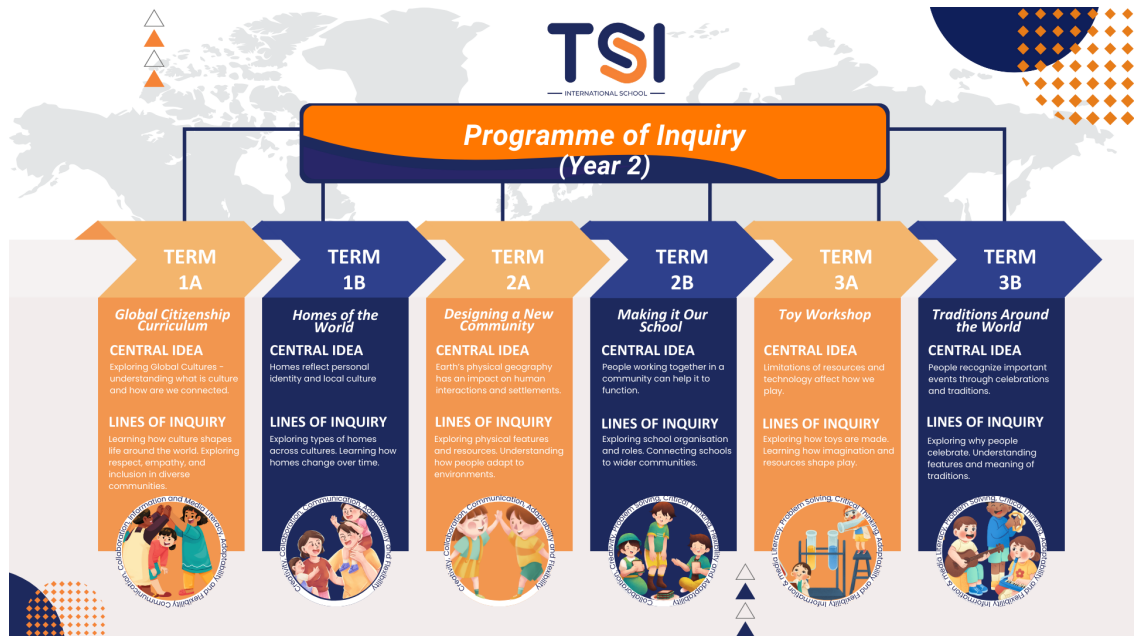
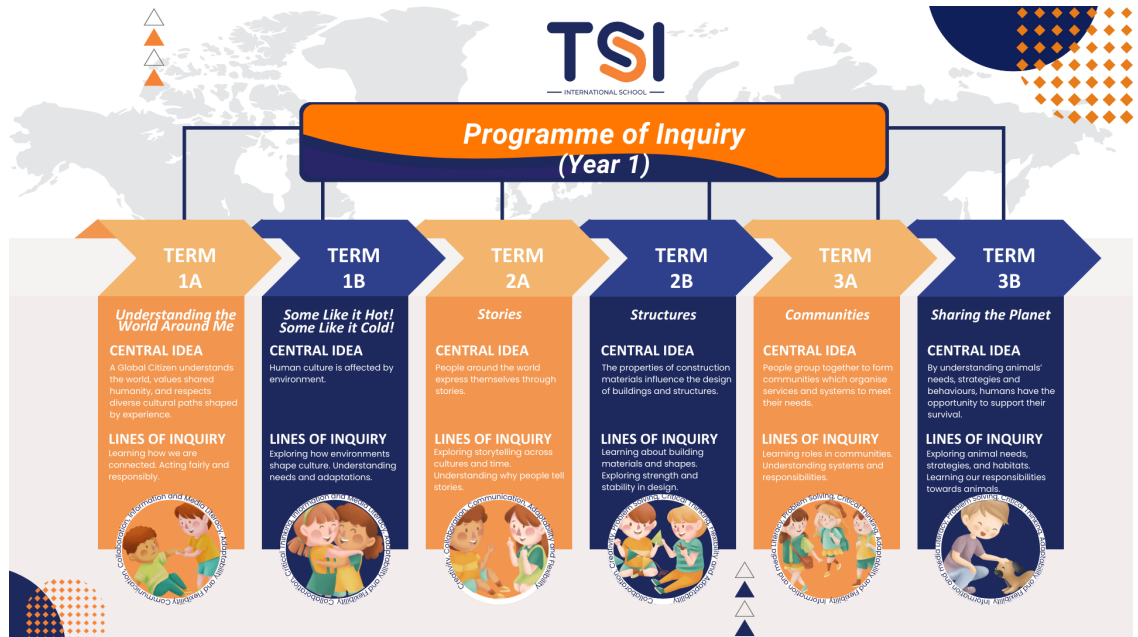
Thoughtful
eam Players

Awesome
ttitude

Respectful
esponsible



Programme of Inquiry





Key Stage 1

At TSI, we provide a well-balanced education that meets the needs of students from diverse backgrounds and ability levels. We believe that every part of school life contributes to learning and personal development. Whether in homeroom and specialist classrooms, outdoors at play, or in the pool, students are continually developing academically, socially, and emotionally.

In Key Stage 1, students transition from the Early Years into a more structured learning environment. While play-based learning remains central to many activities, students' knowledge and understanding are increasingly developed through guided interactions and inquiry-based lessons. As students progress from Year 1 to Year 3, they are gradually encouraged to take greater independence and responsibility for their learning and daily routines.

Assessment and Reporting

At TSI, all students are assessed regularly to monitor progress and guide teaching based on their individual needs. Teachers build assessment opportunities throughout the curriculum in a variety of ways, including observations, performance-based tasks, student conferences, written assignments, and occasional written tests.

In Key Stage 1, students work towards the age-related expectations of the UK National Curriculum, which define the skills, knowledge, understanding, and attitudes expected by the end of the stage. Our approach focuses on holistic development, prioritising well-being, social and emotional growth, and creating a safe and supportive learning environment. We aim for students to confidently tackle new tasks independently, build positive relationships with adults and peers, and develop as risk-takers, inquirers, communicators, and enthusiastic learners.

Ongoing formative assessment allows us to monitor student progress in relation to these objectives. Teachers observe students to understand their level of achievement, interests, and learning styles, and adapt learning experiences accordingly. Observations from parents, caregivers, and teachers are highly valued in this process. Students work regularly with teachers to set targets and goals, promoting confidence and success, and providing opportunities to apply their knowledge in meaningful ways.

At TSI, all observations and assessments in Key Stage 1 are documented using the TSI Assessment Tracking System and Individual Student Assessment Folders. These platforms allow us to upload evidence of progress, track development across all areas of learning, and provide a comprehensive record of each student's experiences throughout Key Stage 1.



Core Subjects

Mathematics

At TSI, we use the White Rose Maths programme. This provides teachers and students with a clear scope and sequence, ensuring progression in line with the UK National Curriculum. Students have access to workbooks and a range of additional resources to support their learning.

While White Rose Maths offers a structured pathway for developing mathematical concepts and understanding, it is used as a supporting resource rather than the sole source of instruction. Lessons are scaffolded and differentiated to meet the diverse knowledge levels and learning styles of our students. Teachers also draw on multiple resources to deepen conceptual understanding, strengthen problem-solving skills, and ensure students develop confidence and fluency in mathematics.

Literacy

At TSI, we believe all our teachers to be language teachers. We know that language development promotes cognitive growth and helps students develop into confident and reflective communicators and decision-makers.

English at TSI is taught in conjunction with our Programme of Inquiry. While English development will take place throughout each Unit of Inquiry, students will also be provided with periods of Reading and Writing Workshops throughout each term that focus on developing specific skills in those areas. Each unit in the workshops will be taught through an Inquiry-Based model, allowing students to develop their understanding at their own pace with mentor texts and other activities to improve their written and reading skills.

Students in the Early Years and Key Stage 1 are provided with phonics lessons throughout the year to improve their reading and writing skills. At TSI, we use Jolly Phonics as our primary support in developing students' phonemic awareness. Students also use High-Frequency and Tricky Words to build their reading fluency and vocabulary.



Programme of Inquiry

At TSI, we believe an Inquiry-based model is essential to a student's development by deepening their understanding and applying these concepts. We value the importance of teaching all students global interdependence, appreciation for cultural perspectives and awareness of social action and their individual role in society.

Units of Inquiry have been written for each Year level. The units are designed to improve not only students' academic development but also their character development. Inquiry-based learning is intended to promote questioning, wondering and exploration of various content knowledge. Students will connect to previous learning, predictions, create and test ideas, clarify existing ideas, research, defend positions and solve problems through various methods.

The Curriculum is designed and taught through Cross-Curricular units of study. The units are built around the Social Studies and Science objectives with a strong focal point in either or both areas, with other subjects integrated into the units. The units are arranged under six different themes and repeated at each grade level through the Early and Primary Years. The themes are:

- Humanity
- Existence
- Communication
- Functionality
- Organisation
- Contribution

All units are integrated and taught across all subjects except where separate subject teaching may occur. The homeroom teacher teaches most subjects unless students attend specialist lessons - Performance Arts, Visual Arts, Punjabi, Hindi, Chinese, Thai, Physical Education, and Swimming.



Thai Language and Culture

At TSI International School, multilingualism is valued as a key asset that enhances learning, promotes inclusivity, and strengthens cultural understanding. The school recognises and supports the diverse linguistic backgrounds of students and uses its multilingual community to enrich learning. The host country language and culture are central to our curriculum. Thai lessons take place three times per week and are differentiated for Thai nationals and non-native learners, with native speakers following an extended programme exploring Thai literature and culture, while non-natives receive tailored language acquisition. The Thai department also leads school-wide cultural events, including Wai Khru Day and Songkran, fostering appreciation for Thai heritage.



The Arts

The Arts consist of Visual Arts and Performing Arts (Drama, Dance and Music). Students attend an Arts lesson twice a week. Throughout the course of the year, the lessons may focus more on visual arts or more on the performing arts, depending on upcoming events or the Unit of Inquiry.

Visual Arts

At TSI, we feel that the Arts are an essential component of a student's education. While students are consistently engaged in artistic activities throughout the day, they will also attend Visual Art classes throughout the school year. The course is taught collaboratively with the homeroom and Art teacher. Each unit will be integrated within the Unit of Inquiry from the homeroom class to make a deeper connection across the Curriculum and subjects. They will bring what they have learned from their homeroom classes and artistically apply them in the Visual Arts subject.

Performing Arts

In addition to Visual Arts, students have opportunities to express themselves through Drama, Dance, and Music. Performing Arts are integrated with the Units of Inquiry, providing meaningful contexts for creativity and self-expression. Specialist teachers guide students in learning specific dances, performances, and how to play musical instruments such as the melodica and harmonica, often in preparation for school festivals and events. Students are encouraged to showcase their skills to peers, teachers, and parents, building confidence, collaboration, and a love for the performing arts.





Foreign Languages and Culture

In Key Stage 1 and Key Stage 2, students may choose Hindi, Punjabi, or Mandarin (Chinese) as an additional language. Each language curriculum is carefully differentiated to support all ability levels and learning styles, ensuring that every student can make progress. The programme is designed to build both oral and written language skills, while also fostering confidence in communication.

Similar to the Thai Language and Culture programme, our Foreign Language teachers organise special cultural events that give students authentic opportunities to deepen their understanding and appreciation of the language and its cultural context.



Physical Education and Swimming

At TSI, we are committed to ensuring that students learn through and about movement, fostering both physical competence and an enjoyment of being active. We aim to promote a lifelong appreciation for health, fitness, and physical activity.

The Physical Education curriculum is based on the UK National Curriculum and provides a wide range of opportunities for students to develop fundamental movement skills. In Key Stage 1, students build their agility, balance, and coordination through engaging in both competitive and cooperative activities. These experiences help them to communicate effectively, collaborate with peers, and develop resilience when working individually and in teams.

Swimming is an integral part of our programme, with weekly lessons provided for all students. In Key Stage 1, instruction focuses on developing water confidence and foundational swimming techniques, enabling students to use their arms and legs effectively to remain afloat and swim short distances with increasing independence.

Students also participate in Mini Sports Days, providing additional opportunities to showcase their skills, enjoy friendly competition, and develop sportsmanship.





— INTERNATIONAL SCHOOL —

BEARING CAMPUS

1799 Thang Rotfai Sai Kao Road,
Samrong Nua, Samut Prakan 10270
Phone: 02-113-2525 | Email: primary.b@tsi.ac.th

WONGWIANYAI CAMPUS

717 Prachathipok Road, Wongwianyai
Bangkok, Thailand 10600
Phone: 02-861-6161 | Email: primary.w@tsi.ac.th